



# Hospital Management Information System

We cure HMIS

We cure CMIS



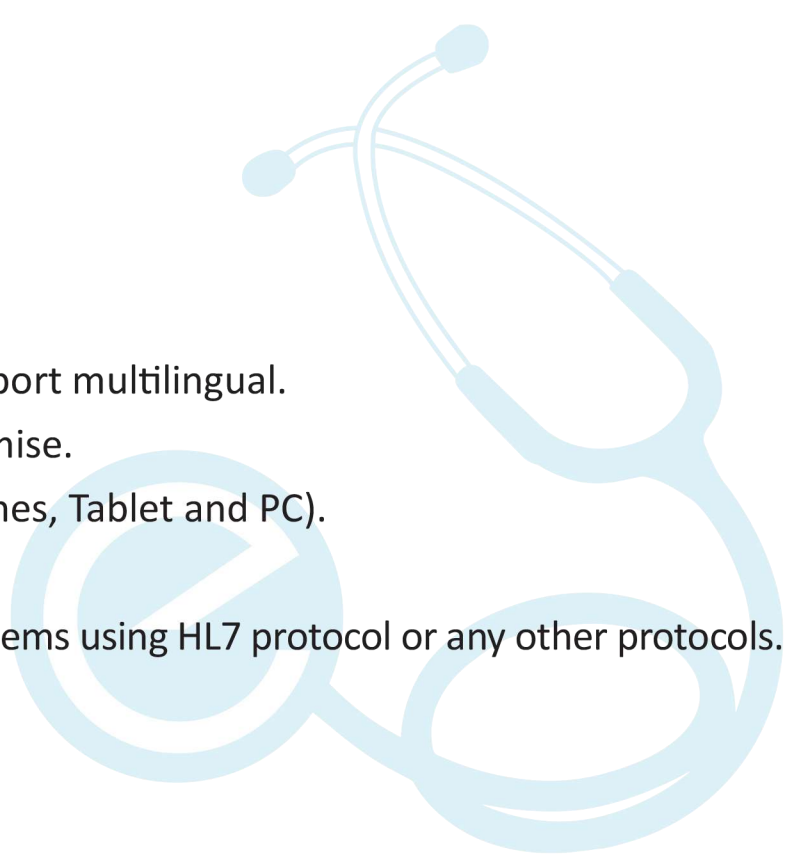


## What's Wecure?

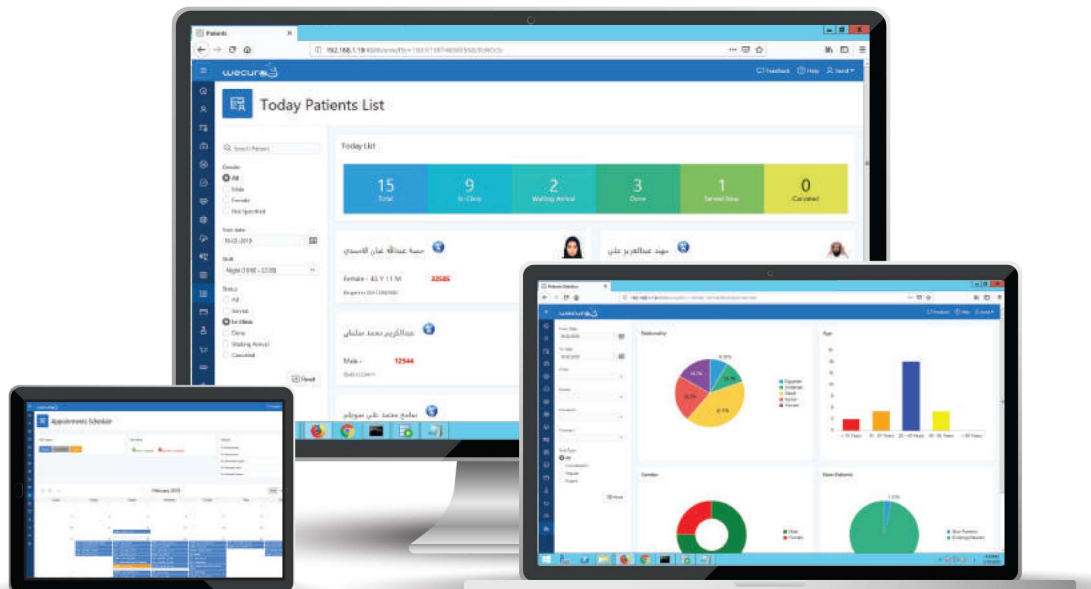
Wecure is a hospital management system that helps managing all activities at your hospital or medical entity, from administrative activities to medical and financial activities. Wecure consists of 14 different modules, connected and Integrated to help in getting the highest productivity level.

## Why Wecure?

- ✓ User friendly.
- ✓ Cost reduction.
- ✓ Web-based application and support multilingual.
- ✓ Can work in a cloud and on premise.
- ✓ Work on any device (Smart phones, Tablet and PC).
- ✓ Fully integrated.
- ✓ Can be integrated with other systems using HL7 protocol or any other protocols.
- ✓ Real-time analytics and actions.
- ✓ Customizable.



# Wecure Modules





# Outpatient Department



Automate and streamline clinic workflow by using electronic health record (EHR). a real-time, patient-centered records that make information available instantly and securely to authorized users.



Outpatient EMR (with configurable form designs to capture SOAP notes, diagnosis and e-Prescriptions), pending prescriptions dashboard, Inpatient EMR (Notes, MAR, clinical documentation), OT-EMR & the EMR View of consolidated electronic medical records.



Great way to engage and build loyal customers and increase your future marketing opportunities by sending SMS and email notification.



Medical sheets for different specialties (Internal –Dental –Gynecology ...etc )



One click patient billing and insurance claims process in order to keep tracking all financial statements and reduce the man-power.



Dealing with international standard coding systems for various diagnostics, services and procedures such as ICD10 / ICD11.



Only with few clicks manage patient's appointments registration and admission.



Creating a more productive environment by managing doctors schedules and daily capacity of each clinic.



Security manager allows creating user accounts for different operators (cashier, receptionist, nurse, doctor, etc.) and giving access to the individual modules and/or functions.



More patient satisfaction by making the doctors more prepared to act, (patient's medical history, diagnoses, medications, treatment plans, allergies, radiology images, and laboratory test results) stored in a secure repository for quick retrieval.



Drug to drug, drug to Lab Results and drug to diagnosis interaction



Automatic calculation of rates for different insurance plans. As well as defining unlimited price lists easily using a wizard

# Inpatient Management

- Manage different wards and departments (Inpatient – ICU-CCU and NICU)
- Patient admission & patient accommodation with check-in and checkout notifications.
- Manage rooms and beds status updates, bed allocation, bed reservation and shifting
- Automatic calculations of accommodation fees according to room type and hospital policy
- Automatic calculation of rates for different insurance plans. As well as defining unlimited price lists easily using a wizard.
- Patient discharge and print detailed patient invoice.
- Manage all inpatient processes at admission counter and discharge counter ward management.
- Link doctors to all supportive departments such as radiology– laboratory for ordering and result viewing
- Record, edit and view the progress notes of the admitted patient
- Record allergies, diagnosis, mark infections & infectious diseases
- E-scheduler for drugs and remarks entry
- Record vital signs and fluid balance sheet
- Integration with all departments of the hospital
- Ward management tracks all services given to a patient connecting to their wards, view, and modify EMR for patient merge & patient transfer.



# Operation Management

- Booking an appointment for surgery according to the instructions of the treating physician and inform the surgeon of the date when confirmed.
- Designed to assist in managing the hospital operating rooms.
- View daily / weekly/ monthly operation theater booking or cancellation.
- The system generates charges for operation room utilization
- Operation theater status and surgery list.
- The operation theatre can access the different hospital departments such as laboratory, radiology, pharmacy, etc.
- Manage checklist (Checklist - Consumables - Medications) through all phases (Pre theater - In theater - Post theater)
- Surgery price policy (Package – Open pill).
- Designed to assist in managing surgery package limitations and all other extra days and items outside the package will be counted
- Record surgery consumables.
- Automatically estimate doctor rates.





# Pharmacy Management

- Maximize store operations, centralize patient and pharmacy information, and support patients wellness programs.
- Pharmacy reporting engine for monitoring financial and key performance indicators KPIs.
- Barcode-driven workflow tools to manage high volumes of dispensing and promote safety at every step of the dispensing process.



- Providing an accurate overview of what is available and needed with complete control over all medicines and items.
- Fully integrate prescription medication dispensing, pharmacy operations and patient clinical services.
- Drug to Drug interaction

# Laboratory Management

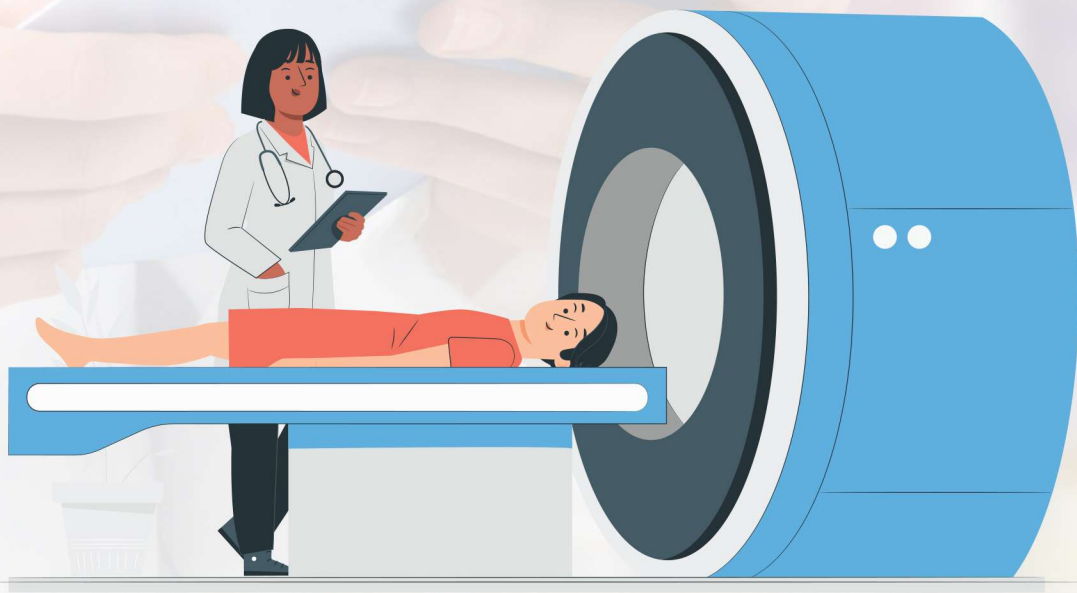
- Full integration between laboratory and doctors requests which helps in saving time and reducing cost
- Auto-generation of sample numbers and sample barcode label printing for sample identification and tracking.



- Automated delta check evaluation.
- Clear color-coded identification of abnormal results.
- Full reporting of all lab Tests results
- Automatic calculation of reference range according to age and gender.
- Automatically places the test results in patient medical record to be available instantly and securely to authorized users.

# Radiology Management

- Registration, scheduling, billing, contract management and accounts receivables
- Register RIS services from reception for the walk-in patients.
- Request RIS services from clinic and inpatient departments by doctor or nurse.
- Write RIS services results report.



- Worklist, processing and reporting
- Ready HL7 interface or bundled with PACS
- Attach X-ray and panorama image (small size image)
- Allow The physician to view and print RIS services results report and image





# Endoscopy Management

- Registration, scheduling, billing, contract management & accounts receivables
- Register endoscopy services from reception for the walk-in patients.
- Designed to support single and multi-site endoscopy services
- The endoscopy procedure reporting core module provides detailed procedure reports with images attached to sites or areas on the anatomy.
- Allow The physician to view and print endoscopy services results report and image
- Request endoscopy services from Clinic and inpatient departments by doctor or nurse.



# Supply Chain Management

- Records details of all purchases. This includes initial purchase price, date of purchase, invoice value, supplier and cost centre details.
- On-line requisition module. This allows physician, nurses, sub stores & pharmacies to order medicines and medical supplies from main stores electronically.



- Tracking of medical supplies consumption.
- Monitors minimum and re-order stock levels as well as near to expiry items.
- Product identification through barcode printing. A barcode reader is used to look up information on the products they represent and reduce the manpower.
- Manage all supply chain transactions (PR, Po, return and store settlement) with multi Level of approvals

# HR Management

- Organization structure.
- Roster management
- Attendance sheet with the ability to integrate with biometric fingerprint machines
- Manage all HR activities (Leaves & vacations, external assignments, rewards & allowances, sanctions & deductions, termination & retired).
- Dynamic tax & social insurance calculations
- Dynamic payroll roles.
- Individual or group transaction creation.
- Dynamic vacation calendar.

- Man-Power planning



- HR portal to allow each employee to create their vacations and permissions, and allow the department's manager to approve employees vacations and permissions.

# Queue Management

- Keep queues organized.



- Increase customer loyalty and retention rates.

- Manage traffic.

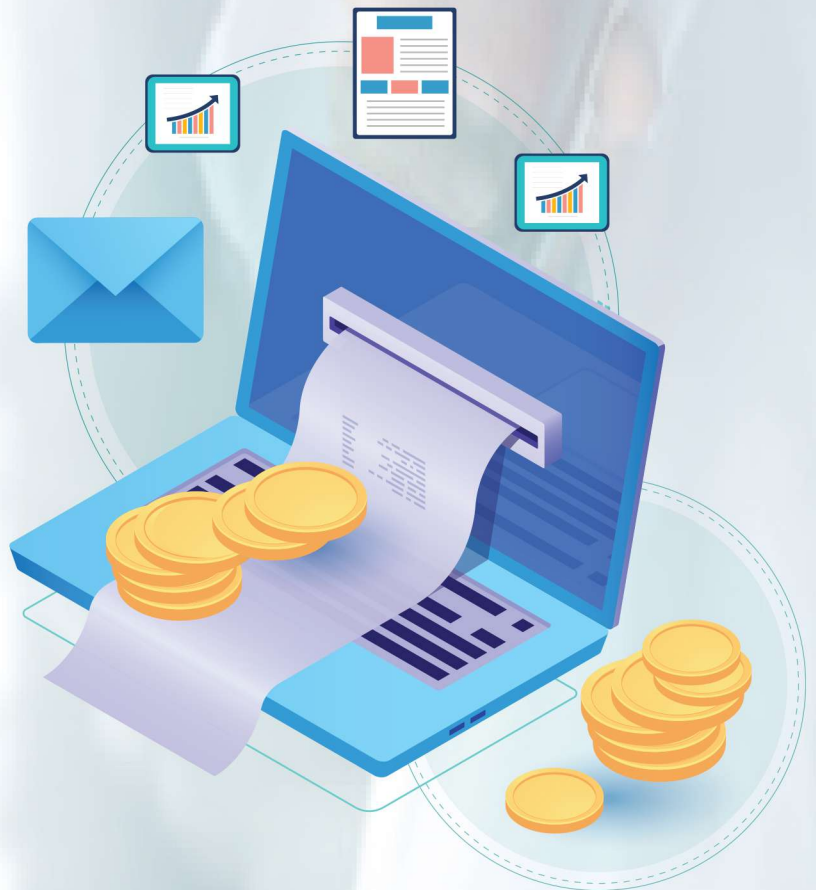
- Reduce waiting time and customer complain.

- Optimize resources.



# Financial Management

- Easily track and control your clinic's accounting, expenses, profits, debits or credits , accounts receivable and accounts payable.
- Patient and corporate account detailing debit and credit transaction, and showing account balance.
- Improving the integrity and quality of customer data and sales.
- Financial dashboards, reporting and analytics system helps monitor and operate your business financial performance utilizing real-time dashboards with income and expenses.
- Unlimited levels of subsidiary accounts.
- Generate excel sheets.
- Auto-generation for financial journals for integrated modules.
- Analyze the revenue and costs by location, service lines, departments and other criteria
- The billing and invoicing management system helps to automate all the financial procedures, exclude the risk of errors and provide the clients with the bills as soon as possible and speed up payment processes
- Integration with electronic invoice





# Asset Management

- Maintain asset information, class, type, description quantity, location, serial number, purchase & supplier details, contract details, compound assets, depreciation rates, groups, categories, asset vendors, assets & depreciation accounts.
- Asset bar-coding
- Asset sales/disposals change asset status to sold or disposed, enter the details and calculate the Profit/Loss.
- Multiple asset categories
- Supports multiple methods of depreciation
- Asset tracking
- Asset reporting per department, location, room and/or user
- Transfer assets between cost centers.



- Multiple asset categories
- Asset value reduction.
- Physical count for assets and relevant reports.
- Asset depreciation reasons and plan.
- Physical count for assets and relevant reports.

# Dashboards & Management



- Generate a summary of daily transactions at the hospital (number of admissions and discharges, percentage of bed occupancy, birth & death rates, pharmacy sales report, number of surgeries performed, purchase and closing of stocks in stores, expired and near expiry medicines reports, etc.).

- Calculate the financial performance and generate statements daily, weekly, monthly, or for a customized period.
- Calculate the revenue per doctor
- Analyze the patient waiting time or bed occupancy details.
- Includes a comprehensive suite of reports with charts, to help keep track of your business. Reporting on inquiries, appointments & financial data is simple.
- Full managerial system allows drilling down into every single detail, which is invaluable for reporting, marketing and improving patient communication and care.

- Compare various parameters such as the lab requests/prescriptions made by the doctor with the actual percentage of tests/sales that happened at laboratories and pharmacies.



# Patient Portal & Website

We cure patient portal is a secure online site that gives patients greater access to their health data online at any time. The essential function of a patient portal is to engage patients in their care, educating them on their health and assisting them in taking control of their treatment options.

## We cure Patient Portal features

- Direct communication with the doctor via message
- Short video appointments & consultation
- Medical history and records
- Prescription ordering
- Appointment scheduling & reservation
- Payments Summary
- Educational materials, tailored to the patient
- Lab and diagnostic test results
- Visit summaries & notes from the doctor
- Services evaluation & patient complaints





# Mobile Application

Wecure mobile application is an android and IOS application with a very simple use and amazing interface that give patients greater access to their health data online at any time.

The mobile application is a patient portal that runs over mobile and makes easy use of all portal functions and the different types of notifications and social media integration.

## Wecure Mobile Application offers the below features:



- Different type of notifications (Medical - Marketing - Health tip -Registration Confirmation)
- Social media integration
- Direct communication with the doctor via message
- Medical history and records
- Prescription ordering
- Appointment scheduling and reservation
- Payments summary
- Educational materials, tailored to the patient
- Visit summaries and notes from the doctor
- Services evaluation and patient complaints



## Egypt

-  +202 28407385
-  +202 01011036150
-  9377 Huda Shaarawy road -  
Mokatam, Cairo - Egypt
-  [info@esmart-me.com](mailto:info@esmart-me.com)

## United Arab Emirates

-  +971559245055
-  [sales@neoveins.com](mailto:sales@neoveins.com)